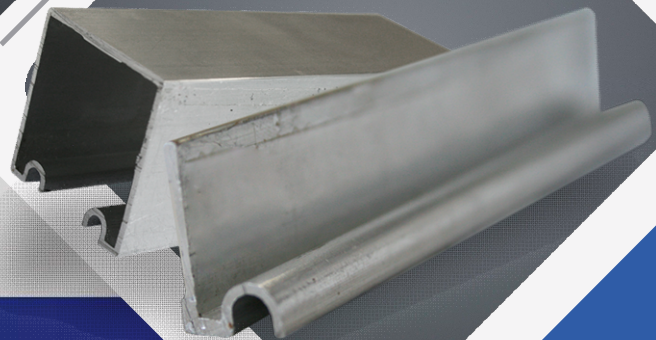
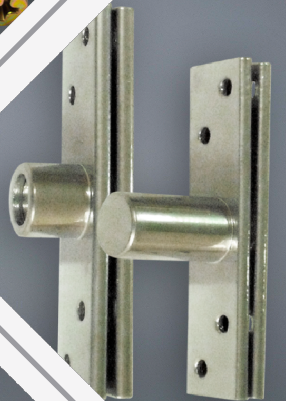
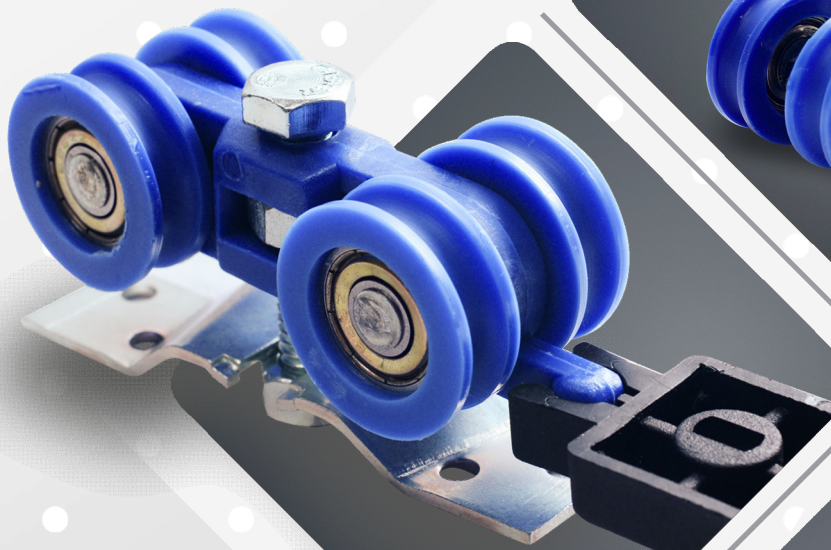




# ITROFIX



Compromisso com o cliente!

# O projeto ganha forma. Com qualidade.

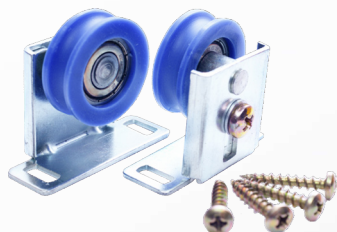
Trabalhar sempre com o conceito de responsabilidade em seus compromissos, somado à grande tradição pelos ótimos produtos, é o que norteia a atuação da ITROFIX.

A empresa utiliza matéria-prima de qualidade comprovada, pois além da fabricação de uma intensa gama de itens, ela mantém parcerias com outros fabricantes conceituados, a fim de atender de forma cada vez melhor os seus clientes.

## ROLDANAS PARA ESQUADRIAS

Rolamentadas - côncavas

RDX-1



TRC 820-1  
TRC 820-2

RDX-2



TRC 835-1  
TRC 835-2  
TRC 835-3

RDX-3



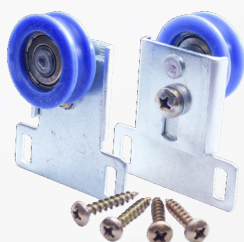
TRC 835-1  
TRC 835-2  
TRC 835-3

RDX-4



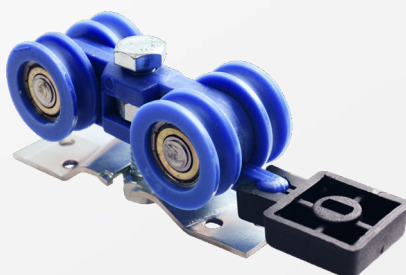
TRC 835-1  
TRC 835-2

RDX-10



TRC 820-1  
TRC 820-2

RDX-15



TRC 835-1  
TRC 835-2

RDX-14



TRC 835-1  
TRC 835-2

Mini - reta

PRR-023



TRJ 814-1  
TRJ 814-2

Rolamentadas - retas

RDX-8



TRC 838

RDX-9



TRC 838

## ROLDANAS PARA MÓVEIS

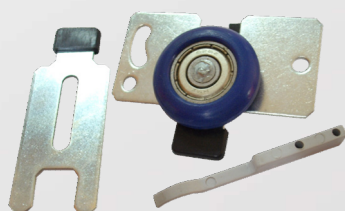
Canaleta rolam. c/ guia de nylon

PRM-7104



Lateral rolamentada

PRM-760



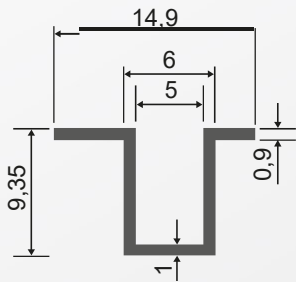
# ITROFIX

WWW.ITROFIX.COM.BR

## PERFIS PARA MÓVEIS

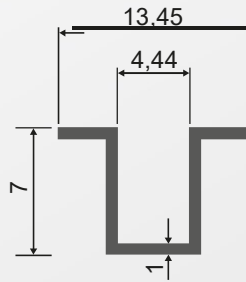
### Canaleta abas desiguais

TPM - 803



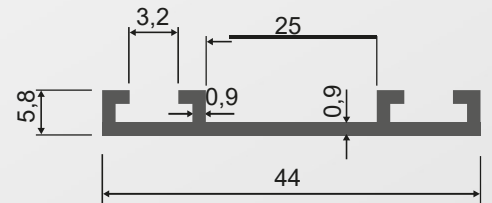
### Canaleta abas iguais

TPM - 803-2



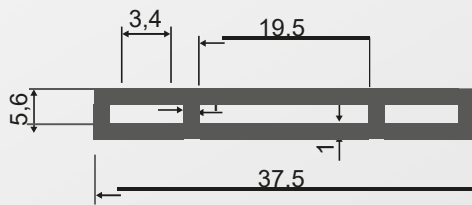
### Perfil inferior para roupeiro

TPM - 805-1



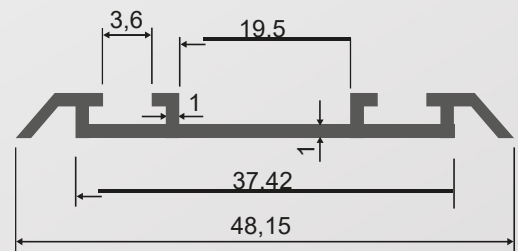
### Perfil inferior para roupeiro

TPM - 805-2



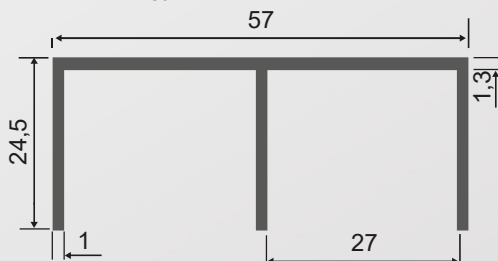
### Perfil inferior com abas

TPM - 806



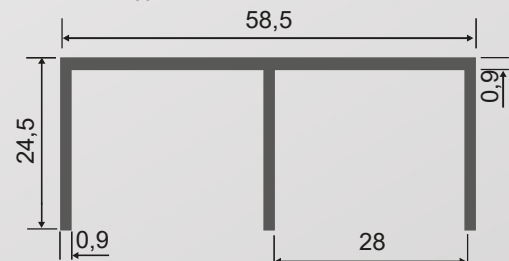
### Perfil superior para guia

TPM - 807-1



### Perfil superior leve para guia

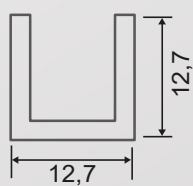
TPM - 807-2



## PERFIS PARA ESQUADRIAS

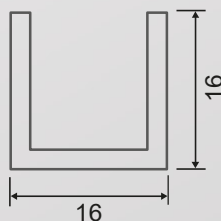
### Baguete 1/2"

TRB-812  
TRB-812-1 reforçado



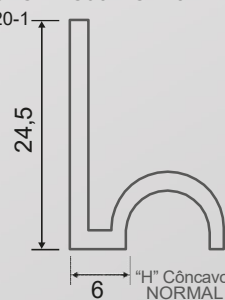
### Baguete 5/8"

TRB-858



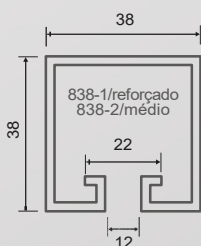
### Côncavo 1 roda normal

TRC-820-1



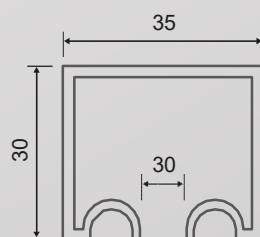
### 38x38 reto

TRP-838



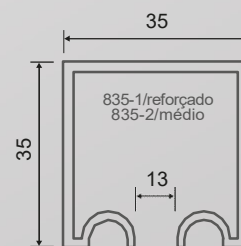
### 30x35 côncavo

TRP-830



### 35x35 côncavo

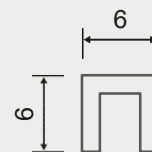
TRP-835



## VERGALHÕES

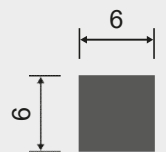
### Oco 6mm

TVO-866-1



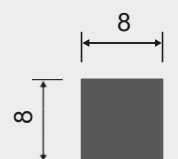
### Maciço 6mm

TVM-866



### Maciço 8mm

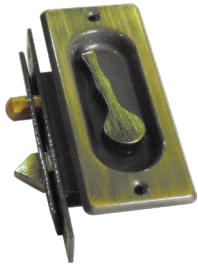
TVM-888



## FECHOS

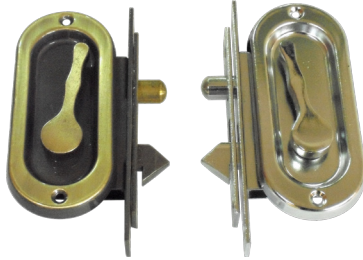
### Bate fecha de embutir

PDV-6033 (LO)  
PDV-6093 (CR)



### Bate fecha de sobrepor

PDV-603 (LO)  
PDV-609 (CR)



### Concha de embutir

PCE-6223 (LO) pequena  
PCE-6226 (CR) pequena



### Concha de sobrepor

PCS-623 (LO) pequena  
PCS-626 (CR) pequena  
PCS-622 (LO) grande  
PCS-6221 (INOX) grande



### Fecho de embutir

PFE-619 (LO) (250mm)  
PFE-618 (LO) (180mm)  
PFE-617 (LO) (120mm)  
PFE-619-1 (CR) (250mm)  
PFE-618-1 (CR) (180mm)  
PFE-617-1 (CR) (120mm)

## PUXADORES

### Elegance (reto)

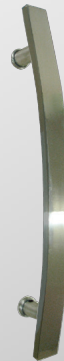


MEDIDAS:  
TAMANHO/FURO  
200/100  
300/200  
400/300  
500/300  
600/400  
800/500  
1000/600  
ACABAMENTOS:  
POLIDO / ESCOVADO

### Nobile (tubo)



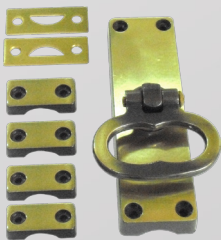
### Elegance (curvo)



MEDIDAS:  
TAMANHO/FURO  
400/300  
500/300  
600/400  
800/500  
ACABAMENTOS:  
POLIDO / ESCOVADO

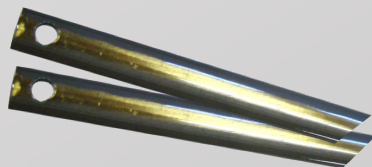
## DIVERSOS

### Cremona



PCL-624 (LO)  
PCL-6241 (CR)

### Vara de cremona



PVC-625.1 (CR) 1,2m  
PVC-625.2 (LO) 1,2m  
PVC-625.3 (CR) 1,5m  
PVC-625.4 (LO) 1,5m

### Guia regulável



PGR-354 (BR)  
PGR-355 (MR)  
PGR-357 (AC)

### Guia prático



PGI-350 (MR)  
PGI-351 (CR)  
PGI-352 (BR)  
PGI-353 (AC)

### Suporte trilho



PST-335 (NAT)  
PST-336 (MR)

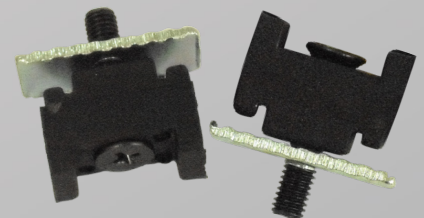
### Limitador interno

PLI-601



### Limitador externo

PLE-611



### Rolete nylon

PRA-325 (12mm)  
PRA-326 (9mm)



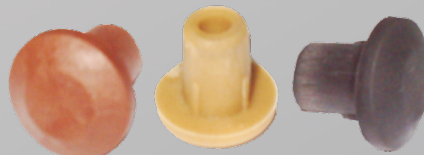
### Pivotante p/janela

PPV-327



### Protetor de batente

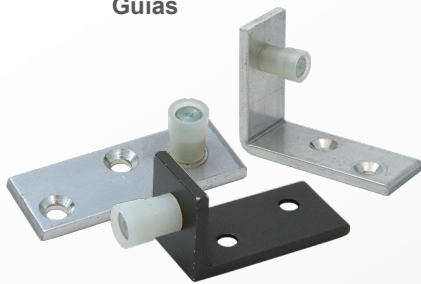
PPB-328 (MR)  
PPB-329 (MA)  
PPB-330 (PR)



**VISITE NOSSO SITE**  
[www.itrofix.com.br](http://www.itrofix.com.br)

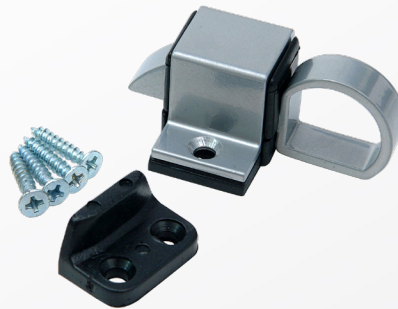
## GUIAS E MAX AR / DOBRADIÇAS E FECHADURAS

### Guias



Reta: 310/311 - 9mm • 316/317 - 12mm  
 Interna: 318/319 - 9mm • 320/321 - 12mm  
 Cantoneira: 306/307 - 9mm • 312/313 - 12mm  
 \*cor BZ ou NAT

### Fecho gatilho



607 (BZ)  
 608 (AL)

### Fecho alavanca



604 (BZ)  
 605 (AL)

### Max Ar Prático

PBN-502



\*Disponível também na cor BZ  
 \*Tamanhos de 200mm a 600mm

### Max Ar Plus

PBZ-542



\*Disponível também na cor NAT  
 \*Tamanhos de 200mm a 600mm

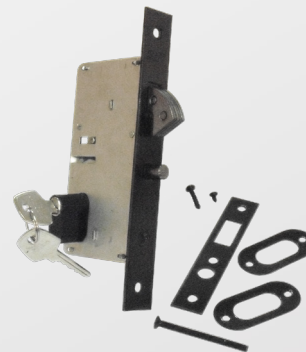
### Pivotantes



PAP-338 - até 120kg

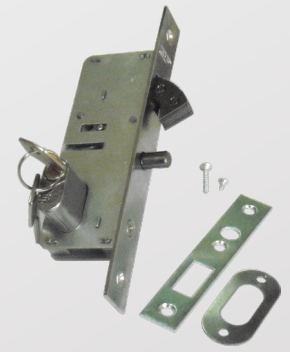
PAP-339 - até 250kg

### Fechadura monobloco p/porta



PFP-651 (LO) broca 45mm  
 PFP-6511 (CR) broca 45mm

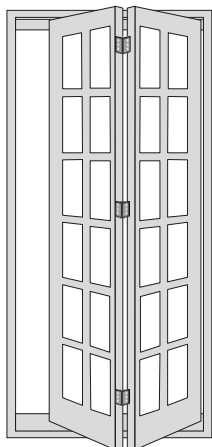
### Fechadura meio cilindro p/janela



PFJ-650 (LO) broca 29mm  
 PFJ-6501 (CR) broca 29mm

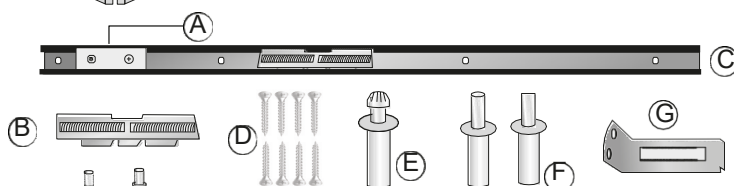
## KITS

### KIT 720 - PORTA CAMARÃO

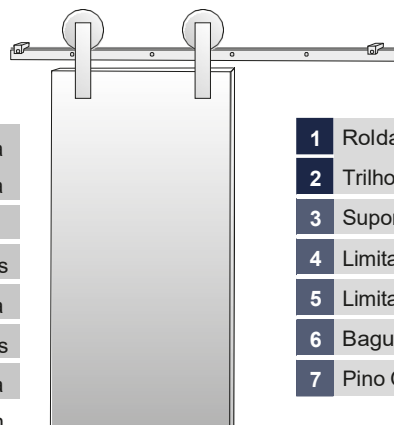


<b>A</b>	Chapa	1 peça
<b>B</b>	Deslizante	1 peça
<b>C</b>	Trilho - cor: bronze	1,0m
<b>D</b>	Parafusos de fixação	8 peças
<b>E</b>	Parafuso dentado	1 peça
<b>F</b>	Pino branco	2 peças
<b>G</b>	Chapa serrilhada	1 peça

Obs.: tamanhos 1m e 1,2m.

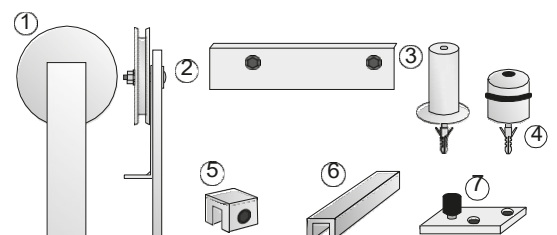


### KIT 730 - PORTA DE CORRER



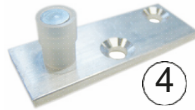
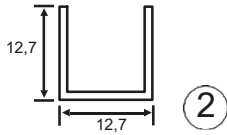
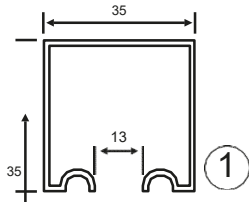
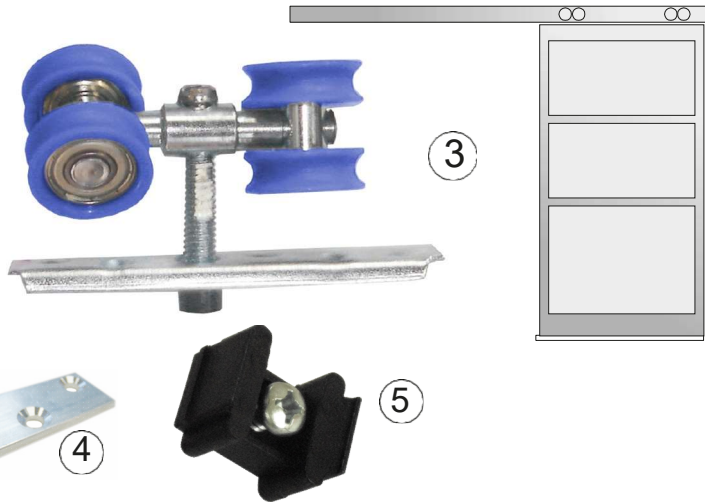
<b>1</b>	Roldana
<b>2</b>	Trilho maciço em alumínio
<b>3</b>	Suporte para fixação do trilho na parede
<b>4</b>	Limitador da porta
<b>5</b>	Limitador das roldanas
<b>6</b>	Baguete
<b>7</b>	Pino Guia

Acabamentos: acetinado ou polido.



### KIT-710 - PORTA DE CORRER COM BAGUETE

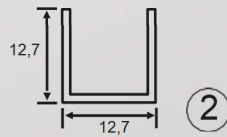
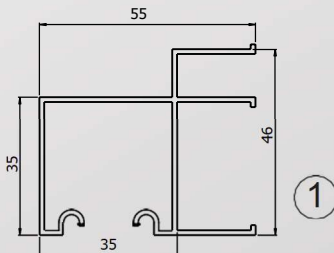
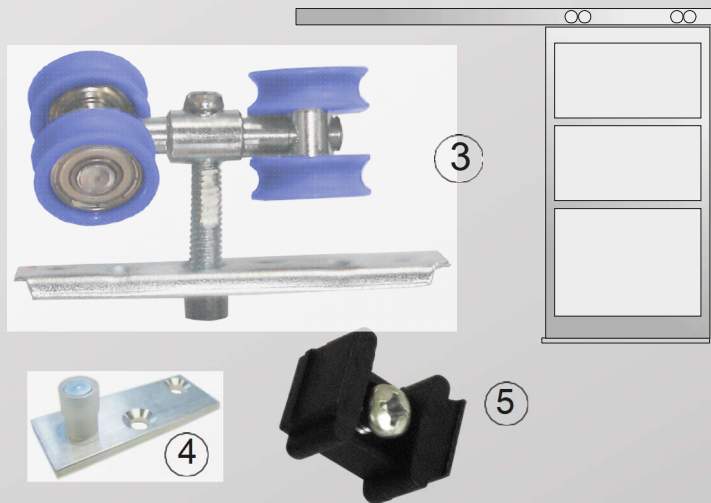
1	TRP 835	Trilho 35x35 abaulado extra	2,0m
2	TRB-812	Baguete 1/2"	1,0m
3	RDX-4	Roldana 4 rodas rolamentada	2 peças
4	PGC-311	Guia reto alumínio 9mm	1 peça
5	PLI-601	Limitador interno	1 peça



• Disponível também com guia prático • Disponível também nas cores marrom e branca • Consulte possibilidade do kit com suporte para trilho

### KIT-740 - PORTA DE CORRER EXTRA

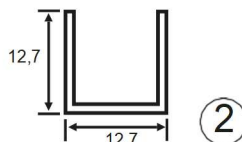
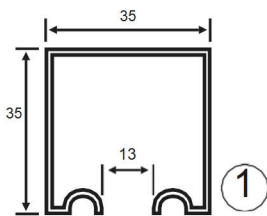
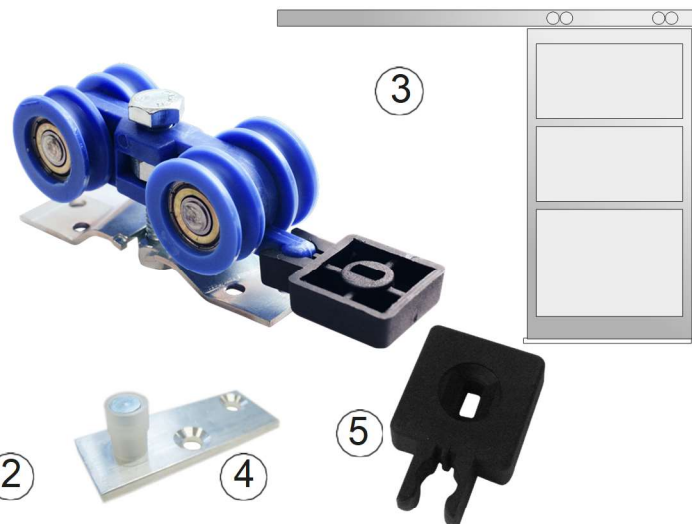
1	TRP 835	Trilho 35x35 abaulado extra	2,0m
2	TRB-812	Baguete 1/2"	1,0m
3	RDX-4	Roldana 4 rodas rolamentada	2 peças
4	PGC-311	Guia reto alumínio 9mm	1 peça
5	PLI-601	Limitador interno	1 peça



• Disponível também com guia prático • Disponível nas cores marrom e branca

### KIT-750 - PORTA DE CORRER COM KIT TRAPÉZIO

1	TRP 835	Trilho 35x35 abaulado extra	2,0m
2	TRB-812	Baguete 1/2"	1,0m
3	RRP-04	Roldana chapa trapézio	2 peças
4	PGC-311	Guia reto alumínio 9mm	1 peça
5	PFR-621	Freio	1 peça



• Disponível também com guia prático • Disponível também nas cores marrom e branca • Consulte possibilidade do kit com suporte para trilho